



JonathanWright
estate agents



Bryanston House South Street, Leominster, HR6 8JQ. Leasehold £95,000

**Bryanston House South Street
Leominster
HR6 8JQ**

Leasehold £95,000

PROPERTY FEATURES

- **A Ground Floor Apartment**
- **Situated in a Converted Grade II Listed Town House**
- **1 Double Bedroom**
- **Living Room**
- **Kitchen with Appliances**
- **Shower Room**
- **Communal Courtyard Garden**
- **Allocated Parking**
- **Close to Town Centre**
- **Leasehold**

To view call 01568 616666



JonathanWright
estate agents





A well presented ground floor apartment, situated in a sympathetically converted Grade II Listed former townhouse and offering accommodation to include a living room, kitchen, 1 double bedroom, shower room and gated access to an allocated parking space. The property is situated in a quiet residential position, just off Leominster's town centre, where a wealth of amenities can be found to include shops, supermarkets, cafes and a sports centre with swimming pool and gym.

Ideal for first time or investment buyers.

An entrance door opens to a most impressive communal reception hall, with doors off to the apartments. A private front door opens into the living room with secondary glazed, sash window to the rear and a wall mounted heater.

A door leads through to an inner hallway with a double glazed window and a storage cupboard with doors off to all other rooms.

The well fitted kitchen has working surfaces with an inset sink, base units under and matching eye level cupboards. There are a range of appliances to include an electric hob, with an oven and grill under, an extractor hood over, an integrated fridge/freezer and planned space and plumbing for a washing machine. The

kitchen also has a double glazed window to the rear.

The good size double Bedroom has a large secondary glazed sash window to the front, an electric wall mounted heater and fitted wardrobe.

The Shower Room has a suite to include an enclosed shower cubical with electric shower over, a low flush w/c and a basin. There is also a heated towel and an extractor fan.

From the main communal reception hall is access to a large Cellar providing communal storage.

OUTSIDE

From South Street is gated to access to a driveway, leading to a residents parking area, with an allocated parking space. To the rear is a communal courtyard garden.

SERVICES

Mains Electricity, Drainage and Water Council Tax Band: A

LEASEHOLD INFORMATION

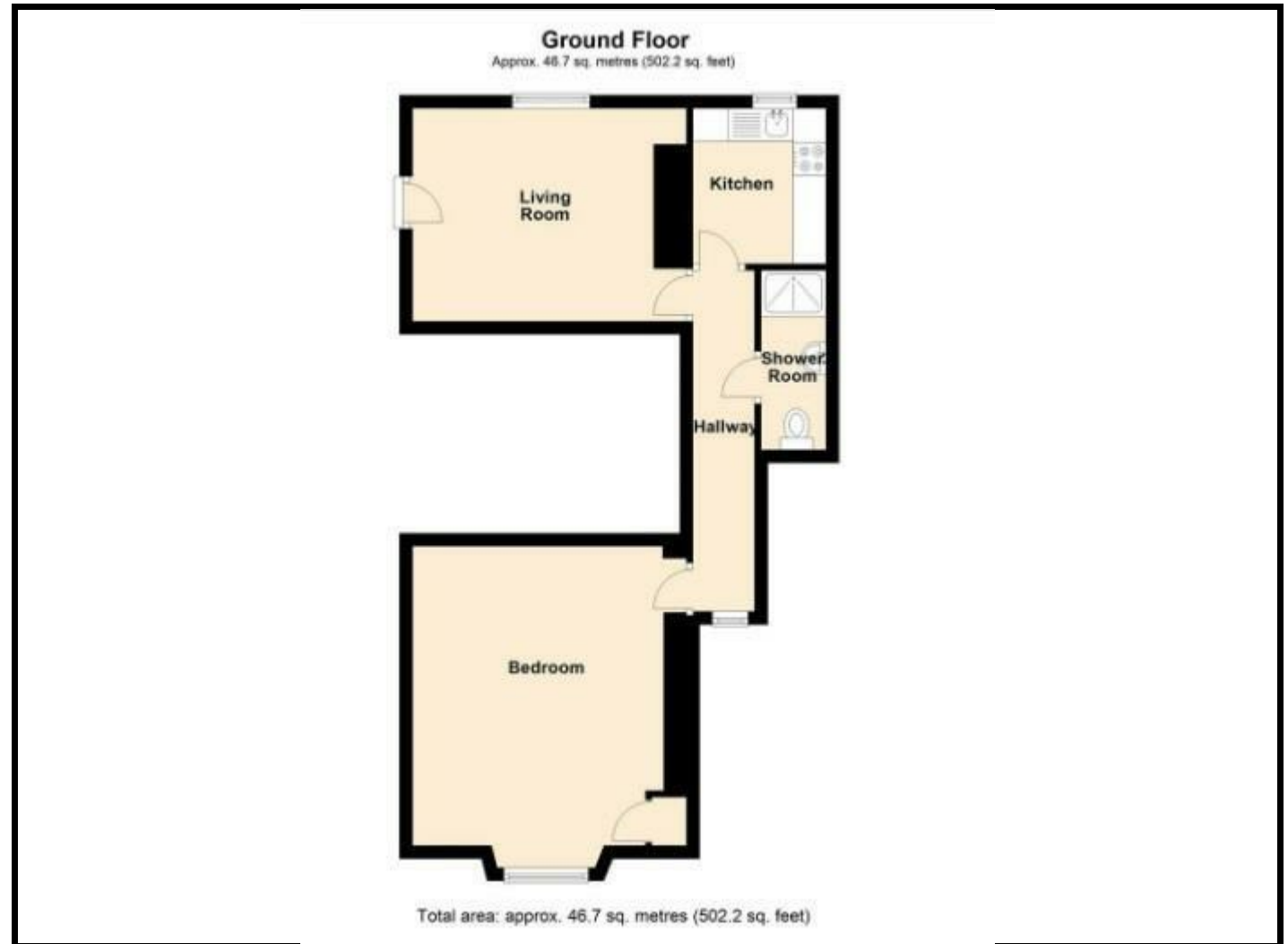
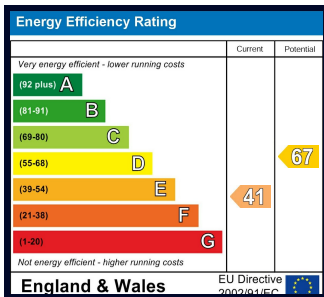
A monthly combined service charge and ground rent of £70 is payable. Lease of 125 Years.

ROOMS AND SIZES

Living Room	3.81 x 3.23 (12'5" x 10'7")
Kitchen	2.36 x 2.01 (7'8" x 6'7")
Bedroom	4.57 x 3.86 (14'11" x 12'7")
Shower Room	2.72 x 0.97 (8'11" x 3'2")

PROPERTY INFORMATION

Council Tax Band - A
Property Tenure - Leasehold



Appliances

Please note that the agents have not tested the appliances to the property and cannot verify they are in working order.

Jonathan Wright Estate Agents for themselves and the seller of this property, whose agents they are, give notice that these particulars do not constitute any part of an offer or contract, that all statements contained in these particulars relating to this property are made without responsibility and are not to be relied upon as a statement or representation of fact and that they do not make or give any representation or warranty whatsoever in relation to this property.

Any intending buyers must satisfy themselves by inspecting or otherwise as to the correctness of each of the statements contained in these particulars. These particulars are issued solely on the understanding that all negotiations are conducted throughout this agency.